

7.6

MASTER PLAN DIAGRAMS  
ORANGEVIEW JUNIOR HIGH | OVERVIEW



- Classrooms, CR
- Science Labs, SCI
- Special Education
- Electives
- Computer Lab
- Admin / Faculty  
FW - Faculty Work, FL - Faculty Lounge
- Library / MPR
- Food Service
- Physical Education / Athletics  
PE - Physical Education, LR - Locker Room
- Support Spaces  
S - Storage, T - Toilets, U - Utility, C - Custodial
- Hardcourts
- Play Fields
- ☆ Main Entrance
- Drop-off

240 ft  
1" = 240'



# 7.6

# MASTER PLAN DIAGRAMS ORANGEVIEW JUNIOR HIGH | EXISTING

Anaheim Unified High School District began a long range Facilities Master Plan in October 2013. Over the last 7 months, the District has engaged school site staff, teachers, principals, community members, and leadership in the discussion about what the vision of AUHSD's schools should become. This existing site map represents the uses identified in the needs assessment study, completed in February 2014. Additional input was incorporated into the plan based on LPA's site walks and Site Committee meetings in November - December 2014, where there was a review of each schools site committee questionnaire responses and initial planning opportunities were identified.

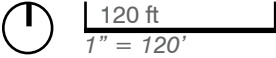
Facilities Master Planning is, by its nature, a broad endeavor. The Facilities Master Plan (FMP) developed is a "living" document and also a strategic planning tool that will identify short-term and long-term facility goals for the District.



- Classrooms, CR
- Science Labs, SCI
- Special Education
- Electives
- Computer Lab
- Admin / Faculty  
FW - Faculty Work, FL - Faculty Lounge
- Library / MPR
- Food Service
- Physical Education / Athletics  
PE - Physical Education, LR - Locker Room
- Support Spaces  
S - Storage, T - Toilets, U - Utility, C - Custodial

- Hardcourts
- Play Fields
- ☆ Main Entrance
- Drop-off

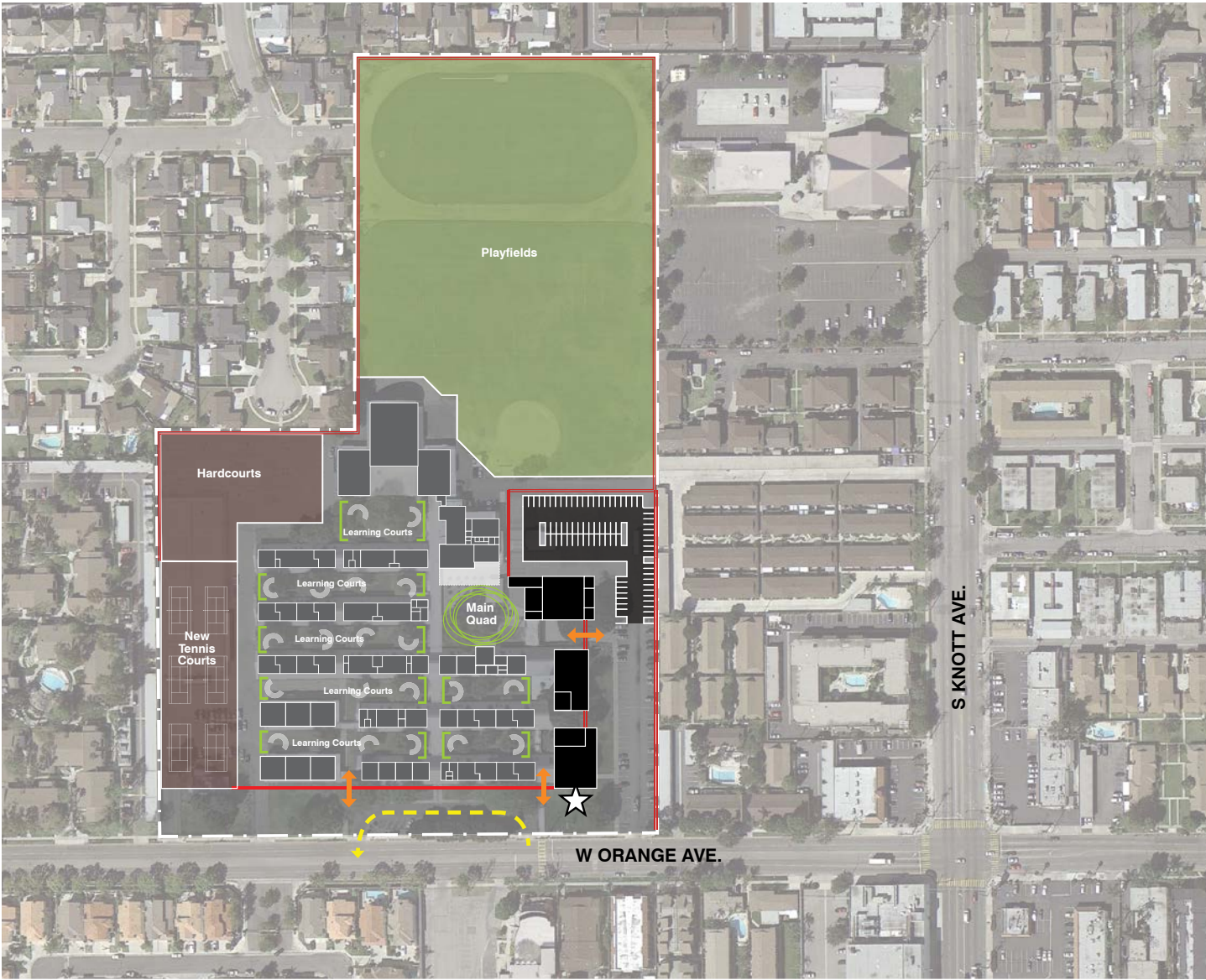
<b>Current Enrollment :</b>	1,174
<b>Teaching Stations</b>	
Classrooms	17
Science Labs	5
Elective	7
<b>Sub Total:</b>	<b>29</b>
Resource Specialist, RSP	3
Special Education	5
Physical Education, PE.	1
<b>Grand Total:</b>	<b>38</b>



W ORANGE AVE.

7.6

MASTER PLAN DIAGRAMS  
**ORANGEVIEW JUNIOR HIGH | PROPOSED OVERALL + CIRCU.**



- Main Entry Point / Circulation
- Drop-Off
- Fire Lane
- Fencing / Landscape Buffer
- Existing Building
- New Construction
- Learning Courts
- Main Quad
- Hardcourts
- Play Fields
- Main Entrance

240 ft  
 1" = 240'



# 7.6

# MASTER PLAN DIAGRAMS ORANGEVIEW JUNIOR HIGH | PROPOSED



The improvements shown on this proposed plan represents the optimal vision based on the Educational Specifications developed with the input of the principals, teachers, community members and leadership over the course of the Facilities Master Plan (FMP) project. Implementation of these projects depends upon funding. The projects will most likely be phased in over time.

The master plan is designed to serve as a starting point to plan for future improvements. One of the main goals of this process is to **ensure available improvements at all sites**. A master plan is the first step in moving forward to improve our facilities district-wide. As funding becomes available, the District will go back to all of the school sites to work through the next phase of construction design details and to develop projects consistent with your teachers, students, parents, and administrators' needs and wants.

**Modernization**

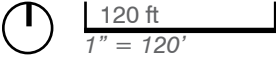
**New Construction**

**Reconfigure**

- Classrooms, CR
- Science Labs, SCI
- Special Education
- Electives  
Lab spaces will be determined by program need. They could include PE, STEW, or other elective.
- Computer Lab
- Admin / Faculty  
FW - Faculty Work, FL - Faculty Lounge
- Library / MPR
- Food Service
- Physical Ed / Athletics  
PE - Physical Education, LR - Locker Room
- Support Spaces  
S - Storage, T - Toilets, O - Office  
U - Utilities & Building Support, C - Custodial

- Learning Courts
- Main Quad (Site Improvements)
- Hardcourts
- Play Fields
- Main Entrance
- Fire Lane
- Fencing / Landscape Buffer
- Drop - Off

<b>Planning Capacity:</b>	1,200
Recommended Parking:	99
<b>Teaching Stations</b>	
Classrooms	23
Science Labs	6
Elective	10
<b>Sub Total:</b>	<b>39</b>
Resource Specialist Program / Mild - Moderate, RSP/MM	2
Special Education	2
Physical Education, PE.	2
<b>Grand Total:</b>	<b>45</b>



# 7.6

# MASTER PLAN DIAGRAMS ORANGEVIEW JUNIOR HIGH | PROPOSED-PHASE 1

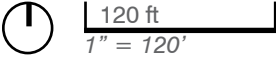


**Modernization**  
**New Construction**  
**Reconfigure**

- Classrooms, CR
- Science Labs, SCI
- Special Education
- Electives**  
Lab spaces will be determined by program need. They could include P.E., STEW, or other elective.
- Computer Lab**
- Admin / Faculty**  
FW - Faculty Work, FL - Faculty Lounge
- Library / MPR**
- Food Service**
- Physical Ed / Athletics**  
PE - Physical Education, LR - Locker Room
- Support Spaces**  
S - Storage, T - Toilets, O - Office  
U - Utilities & Building Support,  
C - Custodial

- Learning Courts**
- Main Quad**  
(Site Improvements)
- Hardcourts**
- Play Fields**
- Main Entrance**
- Fire Lane**
- Fencing / Landscape Buffer**
- Drop - Off**

- PROPOSED SCOPE OF WORK**
1. Reconfiguration of existing Library. Modernization / Reconfiguration at some Classrooms, Elective Labs and Restrooms.
  2. Upgrades to site utilities\*
  3. New Library-Media / Student Union. (Location of building to be confirmed)
  4. Reconfigure / Modernization of Locker Rooms
  5. Expansion of drop-off and fencing
  6. Safety and security enhancements including fencing, cameras and locks
  7. Some Quad/ Learning Court improvements
  8. Flexible furniture, equipment and technology infrastructure (\*Scope of work and areas of work to be determined)







## 7.6

# MASTER PLAN DIAGRAMS

## ORANGEVIEW JUNIOR HIGH | PROJECT COST SUMMARY

SCOPE OF WORK CATEGORIES	TOTAL	PROPOSED PHASE 1
1. Modernize & Reconfigure Existing Classroom & Lab Buildings	\$4,643,000	\$1,000,000
2. Existing Building Systems & Toilets	\$5,686,000	\$2,750,000
3. Site Utilities	\$3,252,000	\$1,500,000
4. New Construction Classrooms	\$0	
5. Design Lab, Science, and Career Tech Education	\$4,330,000	\$2,500,000
6. Performing Arts Improvements	\$940,000	\$0
7. Multipurpose / Food Service Improvements	\$7,786,000	\$750,000
8. Physical Education Improvements	\$3,562,000	\$1,600,000
9. Administration & Staff Support	\$3,115,000	\$0
10. Student Collaboration & Student Support Services	\$3,870,000	\$3,870,000
11. Safety & Security	\$2,826,000	\$1,500,000
12. Outdoor Learning Quads	\$1,809,000	\$0
13. Exterior Play Fields & Hardcourts	\$2,931,000	\$0
14. 21st Century Learning Classroom Flexibility	\$1,100,000	\$550,000
15. Technology Infrastructure	\$766,000	\$383,000
<b>Total Construction / Project Cost (2014\$)</b>	<b>\$46,616,000</b>	<b>\$16,403,000</b>